



Scott Plásticos Ltda.

Guia de Produtos

⇒ Itens Produzidos ⇒ Products Item

⇒ **Barras de Terminais**

⇒ **RCA's**

⇒ **Conectores**

⇒ **Jack's**

⇒ **Borne**

⇒ **Porta-Fusível**

⇒ **Knob's**

⇒ **Push Terminal Board**

⇒ **Pin Jack Board**

⇒ **Connector**

⇒ **Fone Jack**

⇒ **Speaker Terminal Board**

⇒ **Fuse Holder**

⇒ **Knob**

SCOTT Plásticos Ltda.



Uma empresa genuinamente Brasileira

Há dezoito anos fornecendo peças e serviços para o setor eletrônico, a SCOTT Plásticos atualmente atende parte da indústria brasileira e do mercado de reposição.

Contando com um moderno sistema de ferramentaria e injeção de termoplásticos, aplica e desenvolve tecnologia própria na fabricação dos produtos, elaborando projetos e ferramentas para atender as necessidades específicas de cada cliente.

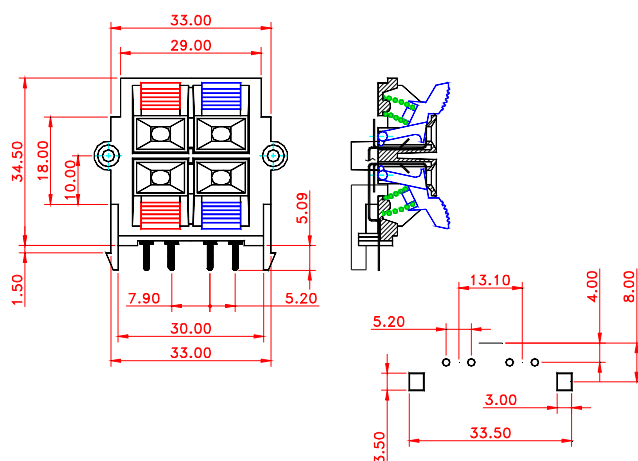
Rua Dalísio S. Barros, 359
Distrito Industrial, Indaiatuba, S.P.
C.E.P.: 13.347-990 Cx.Postal: 2077
PABX.: (19) 3935-6700
Site: www.scottbr.com.br
e-mail: scottbr.idt@terra.com.br / scott@scottbr.com.br

A Scott se reserva o direito de modificar as dimensões existentes neste catalogo sem prévio aviso



Push Terminal Board BTN-22

Barra de Terminal BTN-22



MATERIAL:

Corpo: Poliamida 6 Fv 20%

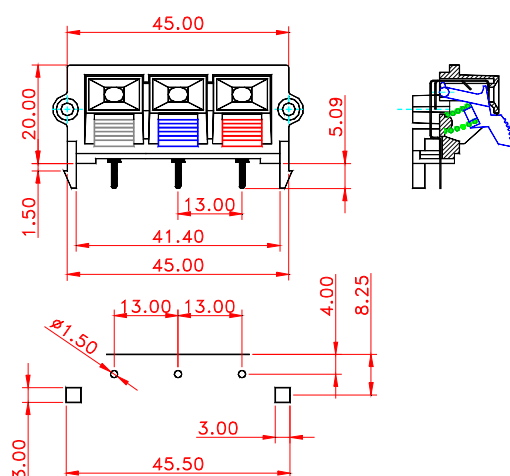
Teclas: Poliamida 6 Fv 20%

Terminais: Latão/Ni

Molas: Aço Mola

Push Terminal Board BTN-03

Barra de Terminal BTN-03



MATERIAL:

Corpo: Poliamida 6 Fv 20%

Teclas: Poliamida 6 Fv 20%

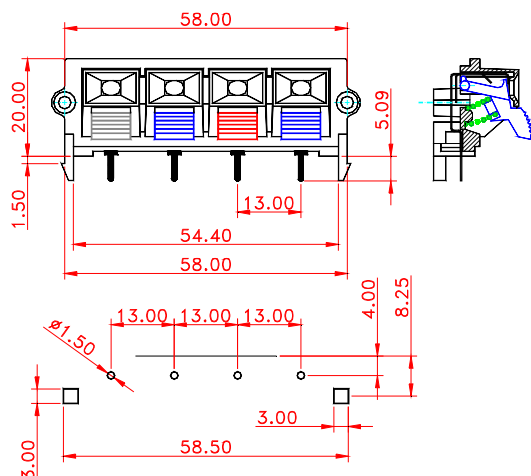
Terminais: Latão/Ni

Molas: Aço Mola



Push Terminal Board BTN-04

Barra de Terminal BTN-04



MATERIAL:

Corpo: Poliamida 6 Fv 20%

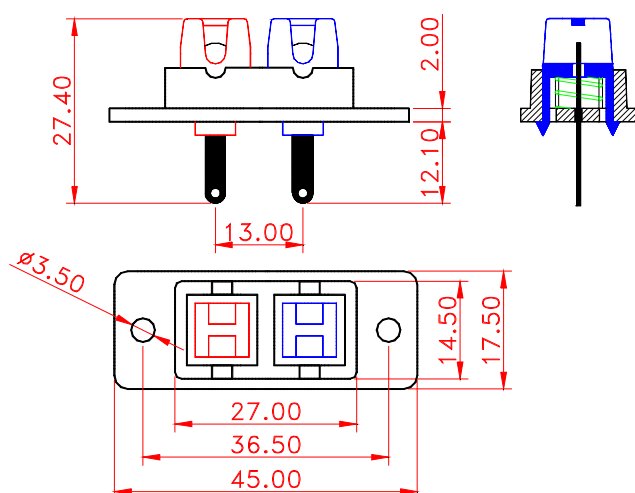
Teclas: Poliamida 6 Fv 20%

Terminais: Latão/Ni

Molas: Aço Mola

Push Terminal Board BTO-02

Barra de Terminal BTO-02



MATERIAL:

Corpo: Poliamida 6 Fv 20%

Teclas: Polipropileno

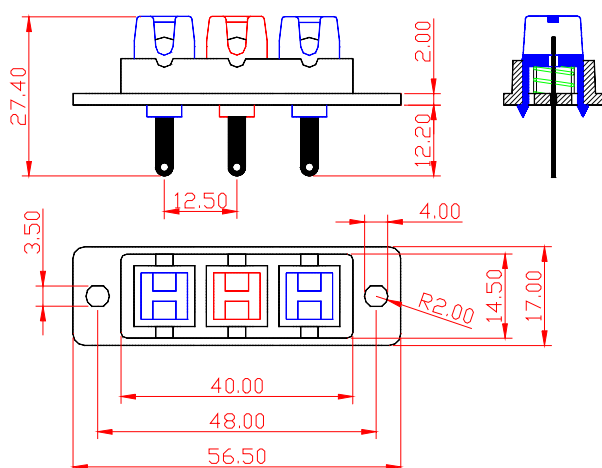
Terminais: Latão/Ni

Molas: Aço Mola



Push Terminal Board BTO-03

Barra de Terminal BTO-03

**MATERIAL:**

Corpo: Poliamida 6 Fv 20%

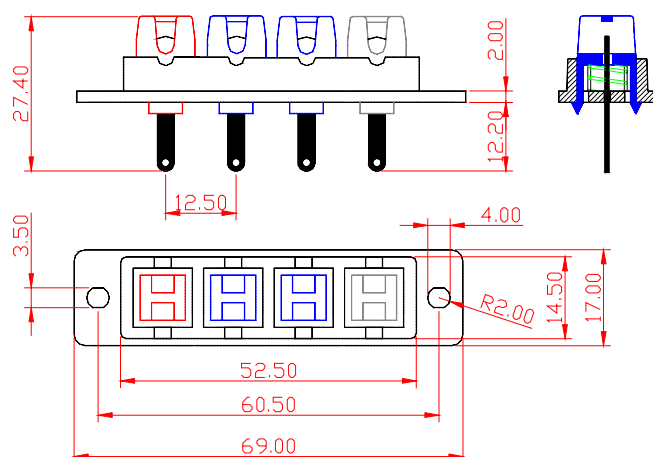
Teclas: Polipropileno

Terminais: Latão/Ni

Molas: Aço Mola

Push Terminal Board BTO-04

Barra de Terminal BTO-04

**MATERIAL:**

Corpo: Poliamida 6 Fv 20%

Teclas: Polipropileno

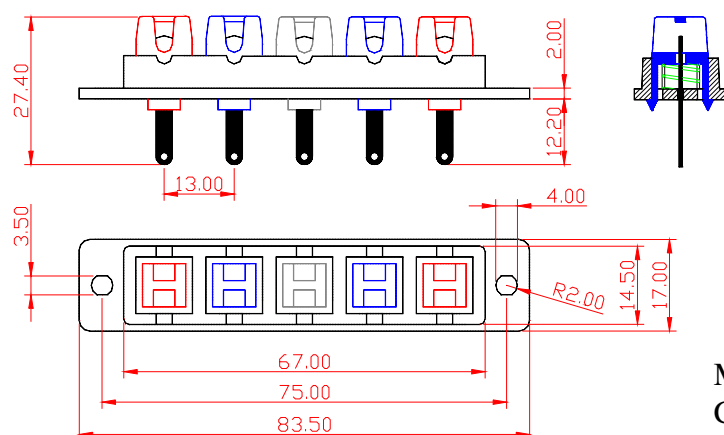
Terminais: Latão/Ni

Molas: Aço Mola



Push Terminal Board BTO-05

Barra de Terminal BTO-05



MATERIAL:

Corpo: Poliamida 6 Fv 20%

Teclas: Polipropileno

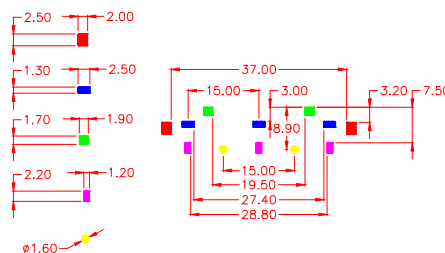
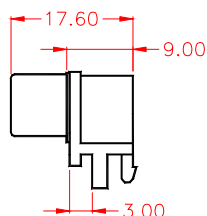
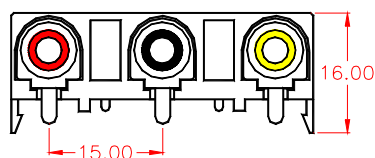
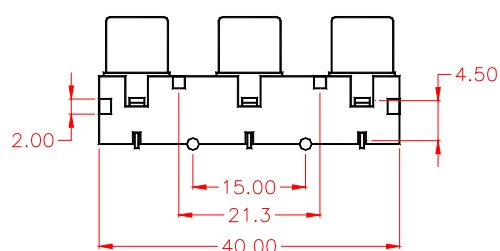
Terminais: Latão/Ni

Molas: Aço Mola



Pin Jack Board RCA-CI-03-2

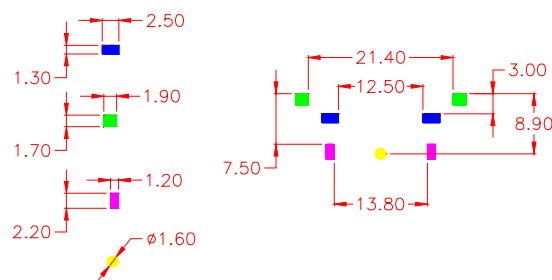
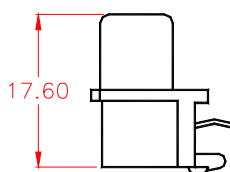
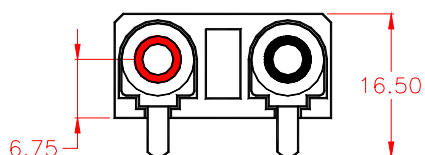
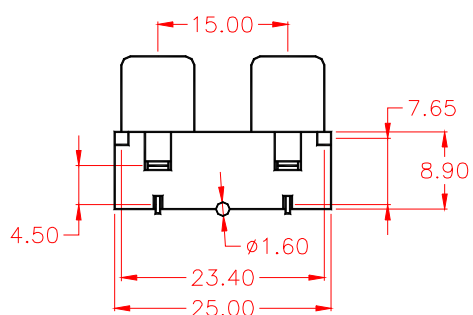
RCA-CI-03-2



MATERIAL:
Corpo: Poliamida 6 Fv 20%
Terminais: Latão/Ni
Canecas: Aço/Ni
Identificadores: Poliestireno

Pin Jack Board RCA-CI-02-2

RCA-CI-02-2

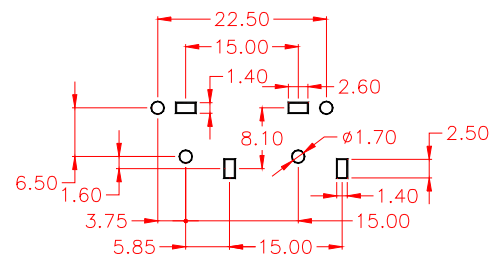
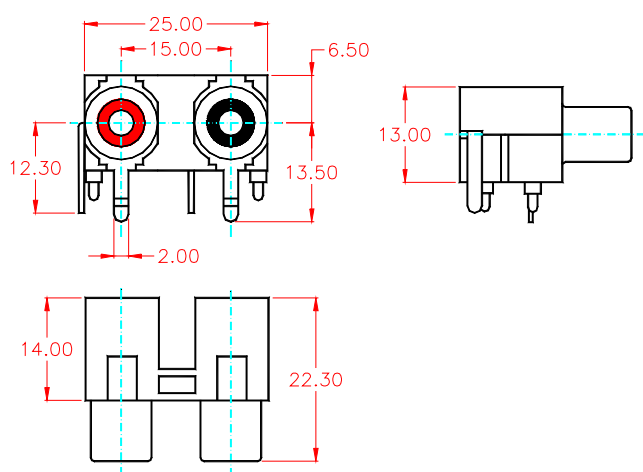


MATERIAL:
Corpo: Poliamida 6 Fv 20%
Terminais: Latão/Ni
Canecas: Aço/Ni
Identificadores: Poliestireno



Pin Jack Board RCA-CI-02-1

RCA-CI-02-1

**MATERIAL:**

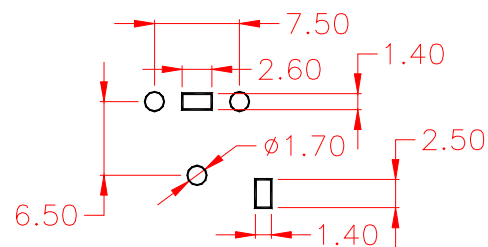
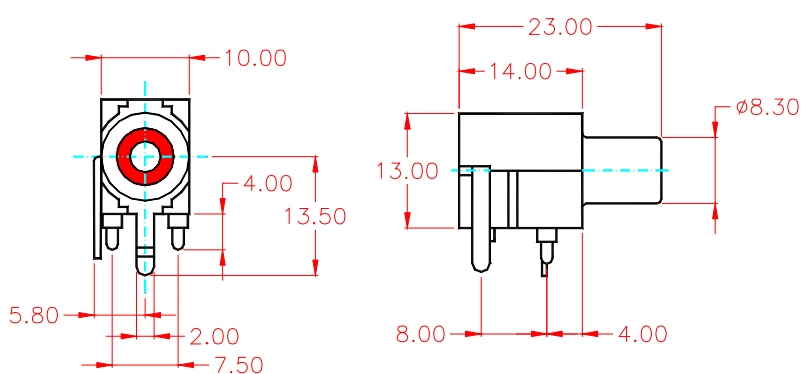
Corpo: Poliamida 6 Fv 20%

Terminais: Latão/Ni

Canecas: Aço/Ni

Pin Jack Board RCA-CI-01-1

RCA-CI-01-1

**MATERIAL:**

Corpo: Poliamida 6 Fv 20%

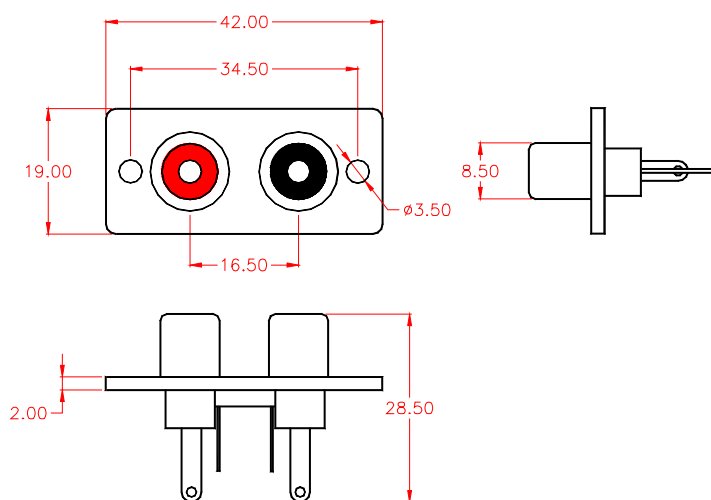
Terminais: Latão/Ni

Canecas: Aço/Ni



Pin Jack Board RCA-PA-02

RCA-PA-02

**MATERIAL:**

Corpo: Poliamida 6 Fv 20%

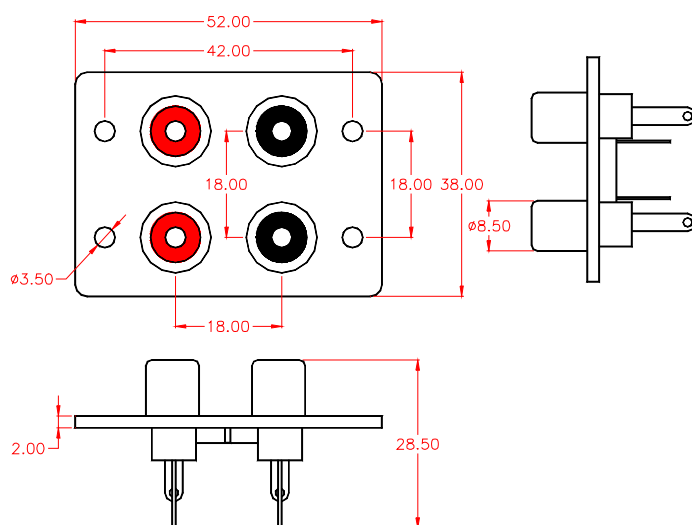
Terminais: Latão/Ni

Canecas: Aço/Ni

Identificadores: Poliestireno

Pin Jack Board RCA-PA-04

RCA-PA-04

**MATERIAL:**

Corpo: Poliamida 6 Fv 20%

Terminais: Latão/Ni

Canecas: Aço/Ni

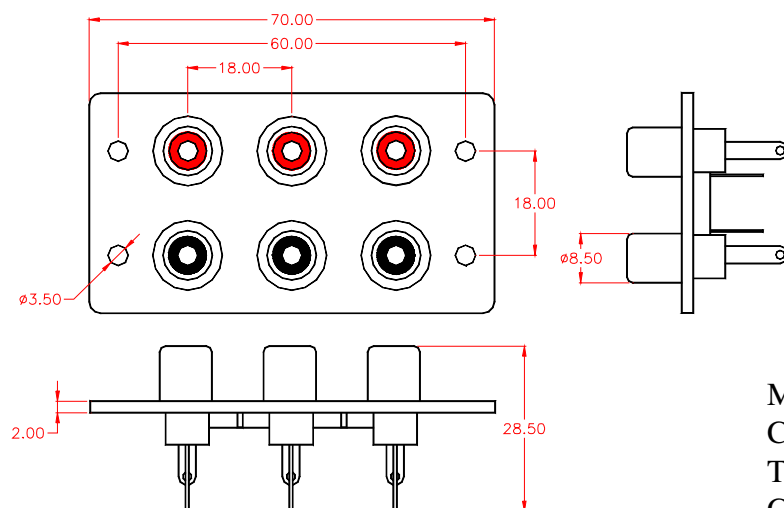
Identificadores: Poliestireno

A Scott se reserva o direito de modificar as dimensões existentes neste catalogo sem prévio aviso



Pin Jack Board RCA-PA-06

RCA-PA-06



MATERIAL:

Corpo: Poliamida 6 Fv 20%

Terminais: Latão/Ni

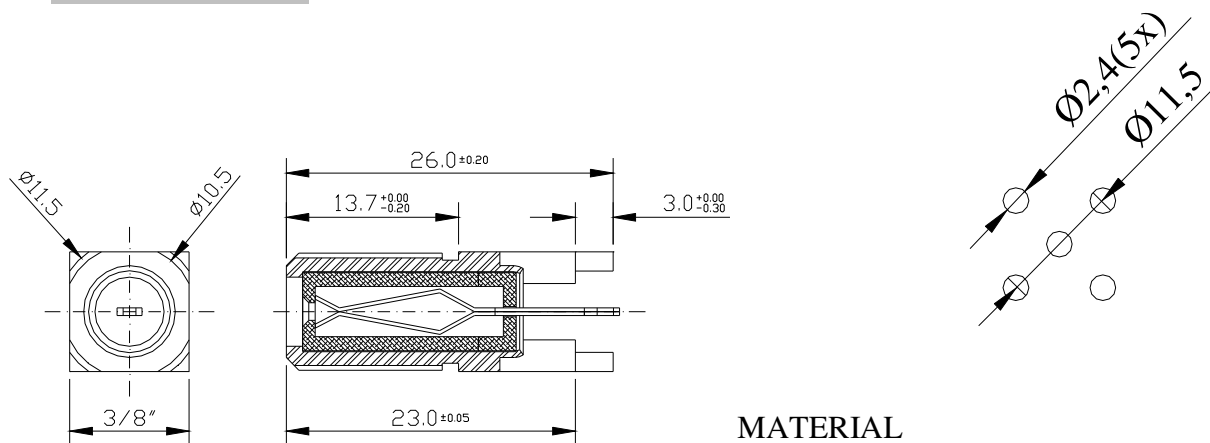
Canecas: Aço/Ni

Identificadores: Poliestireno



Connector Type-Q1

Conector Q1



MATERIAL

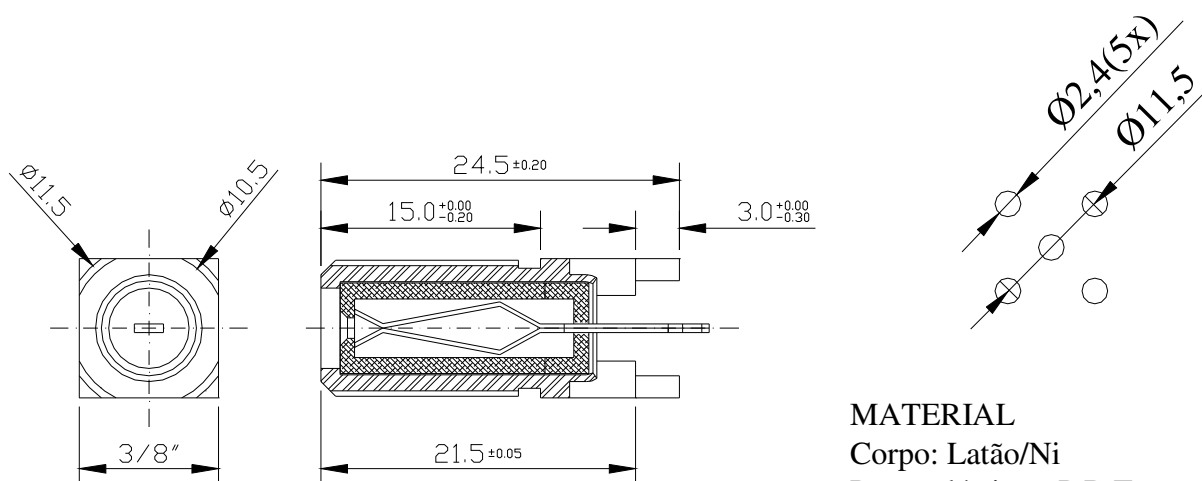
Corpo: Latão/Ni:

Peças plásticas: P.B.T.

Terminais: Latão/Ni

Connector Type-Q2

Conector Q2



MATERIAL

Corpo: Latão/Ni

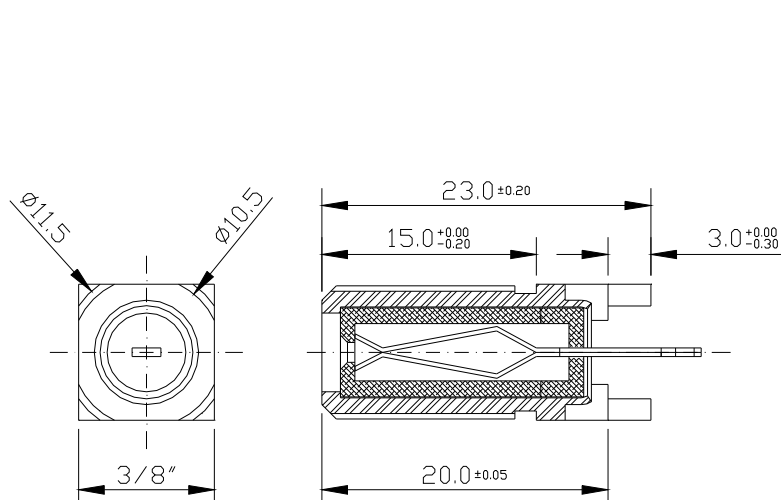
Peças plásticas: P.B.T.

Terminais: Latão/Ni



Connector Type-Q3

Conector Q3



MATERIAL

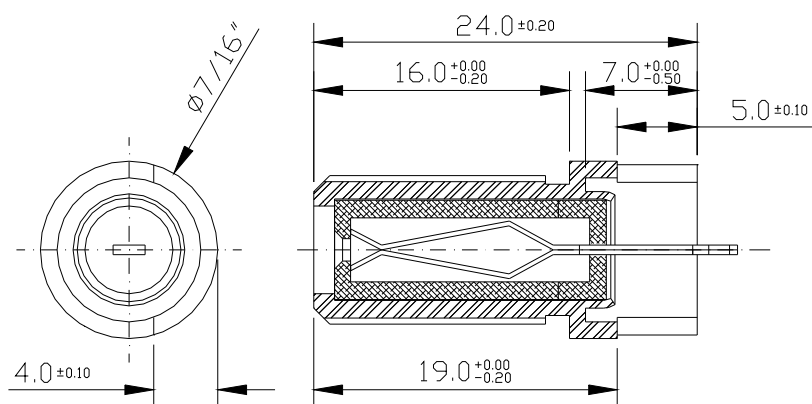
Corpo: Latão/Ni

Peças plásticas: P.B.T.

Terminais: Latão/Ni

Connector Type-R1

Conector R1



MATERIAL

Corpo: Latão/Ni

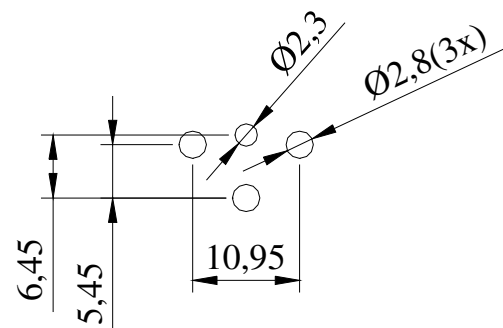
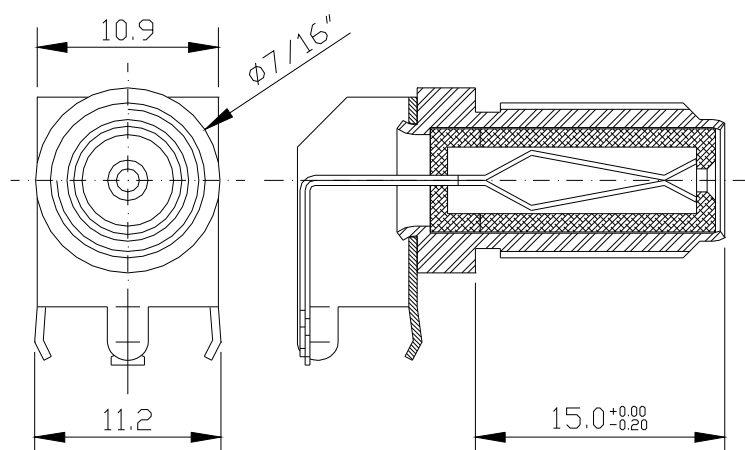
Peças plásticas: P.B.T.

Terminais: Latão/Ni



Connector Type-90°

Conector 90°



MATERIAL

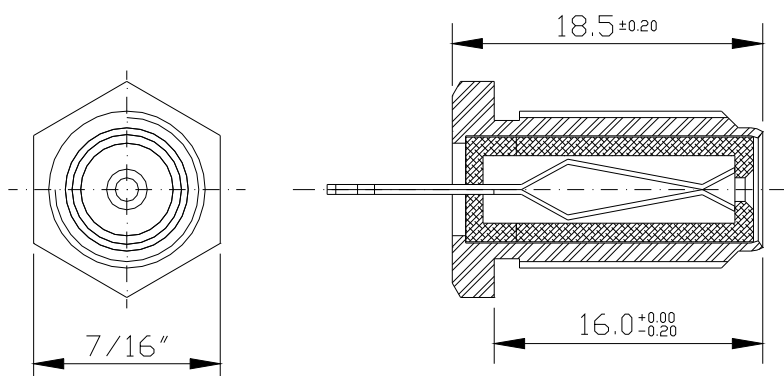
Corpo: Latão/Ni

Peças plásticas: P.B.T.

Terminais: Latão/Ni

Connector Type-S1

Conector S1



MATERIAL

Corpo: Latão/Ni

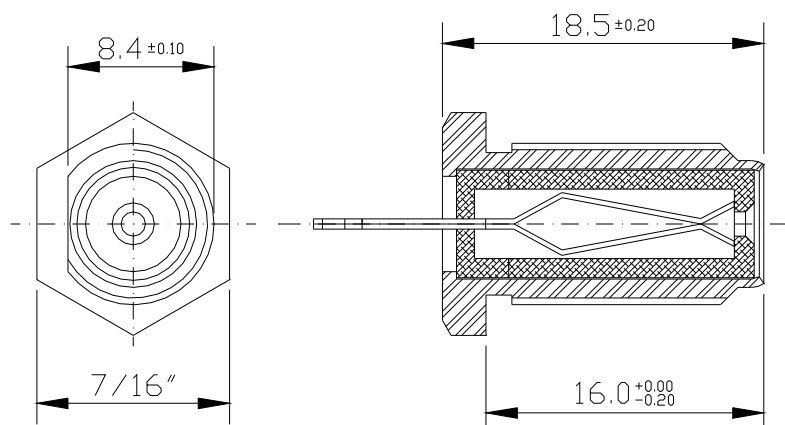
Peças plásticas: P.B.T.

Terminais: Latão/Ni



Connector Type-S2

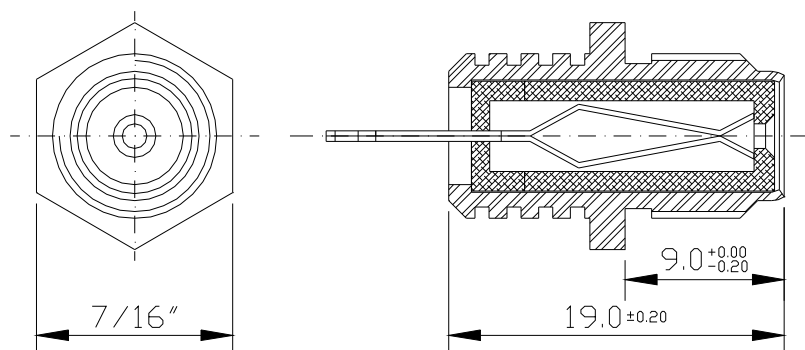
Conector S2



MATERIAL
Corpo: Latão/Ni
Peças plásticas: P.B.T.
Terminais: Latão/Ni

Connector Type-S3

Conector S3

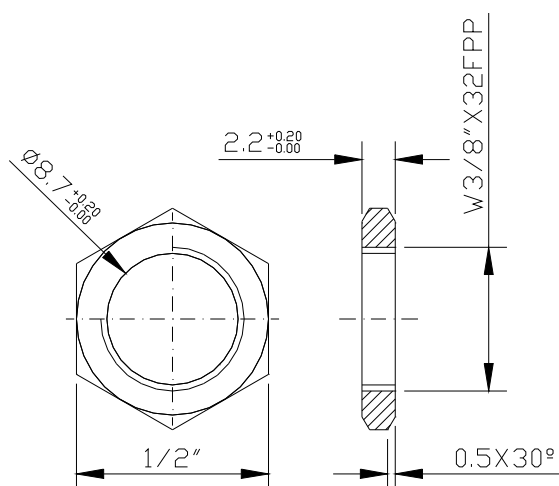


MATERIAL
Corpo: Latão/Ni
Peças plásticas: P.B.T.
Terminais: Latão/Ni



Connector Nut

Porca do Conector

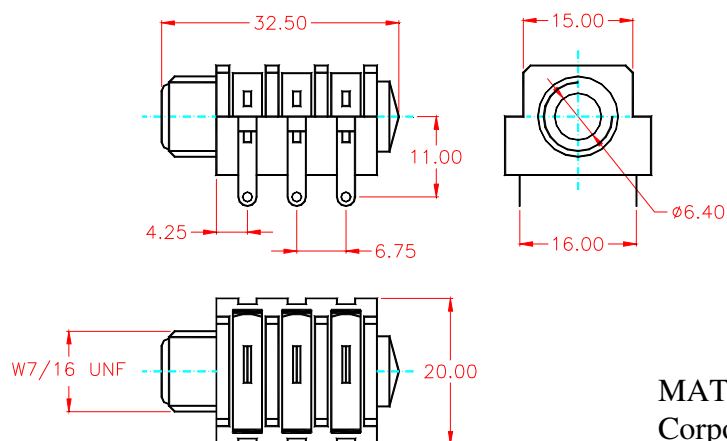


MATERIAL
Latão/Ni



Fone Jack Stereo Close (To Cable)

Jack Stereo Fechado p/ fio

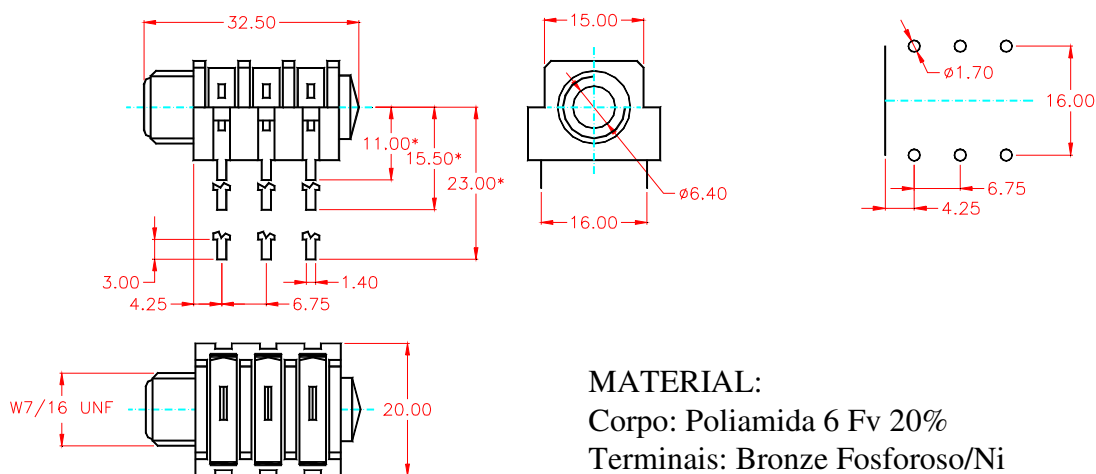
**MATERIAL:**

Corpo: Poliamida 6 Fv 20%

Terminais: Bronze Fosforoso/Ni

Fone Jack Stereo Close (To PCI)

Jack Stereo Fechado p/ PCI

**MATERIAL:**

Corpo: Poliamida 6 Fv 20%

Terminais: Bronze Fosforoso/Ni

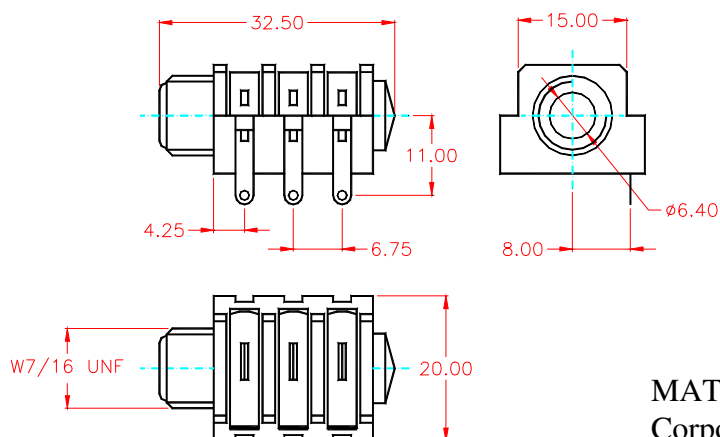
OBS.: As dimensões marcadas com * são os comprimentos existentes para os contatos p/ PCI

A Scott se reserva o direito de modificar as dimensões existentes neste catalogo sem prévio aviso



Fone Jack Stereo Open (To Cable)

Jack Stereo Aberto p/ fio

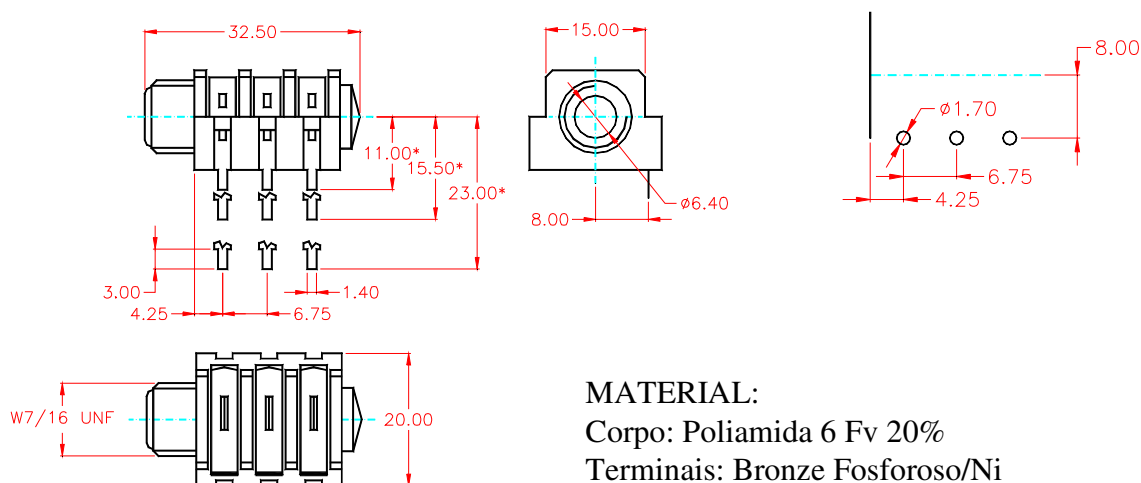
**MATERIAL:**

Corpo: Poliamida 6 Fv 20%

Terminais: Bronze Fosforoso/Ni

Fone Jack Stereo Open (To PCI)

Jack Stereo Aberto p/ PCI

**MATERIAL:**

Corpo: Poliamida 6 Fv 20%

Terminais: Bronze Fosforoso/Ni

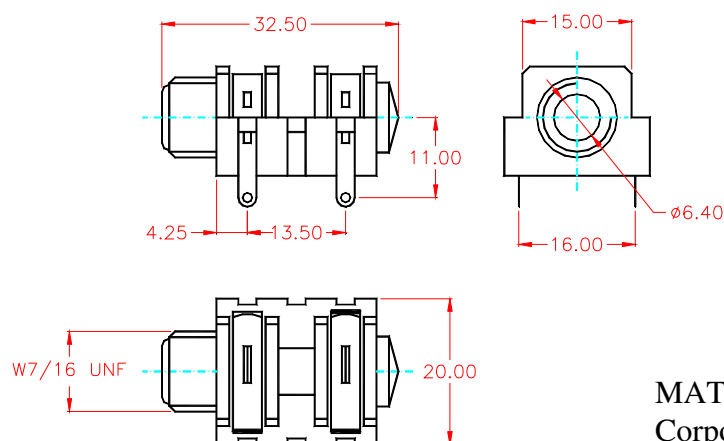
OBS.: As dimensões marcadas com * são os comprimentos existentes para os contatos p/ PCI

A Scott se reserva o direito de modificar as dimensões existentes neste catalogo sem prévio aviso



Fone Jack Mono Close (To Cable)

Jack Mono Fechado p/ fio

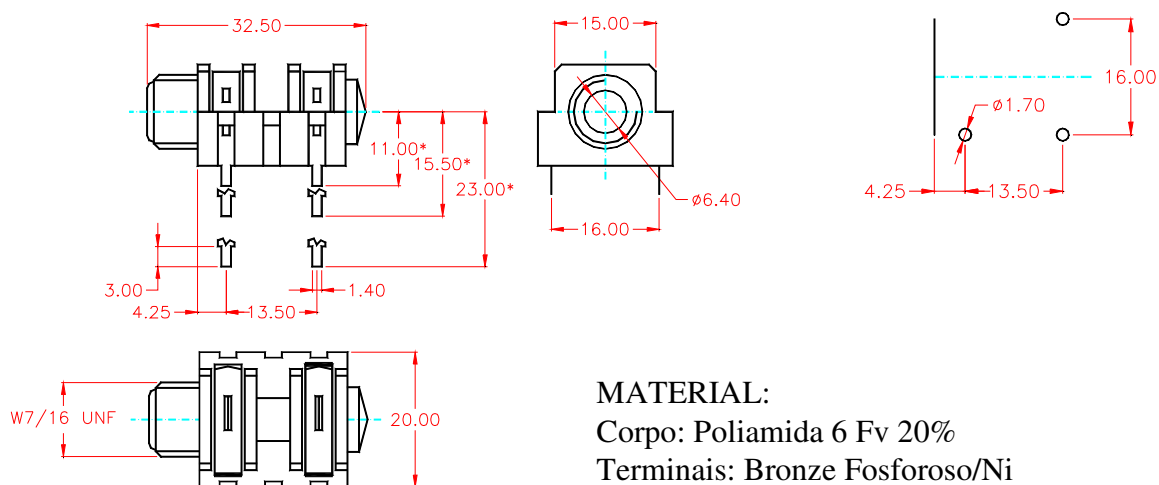
**MATERIAL:**

Corpo: Poliamida 6 Fv 20%

Terminais: Bronze Fosforoso/Ni

Fone Jack Mono Close (To PCI)

Jack Mono Fechado p/ PCI

**MATERIAL:**

Corpo: Poliamida 6 Fv 20%

Terminais: Bronze Fosforoso/Ni

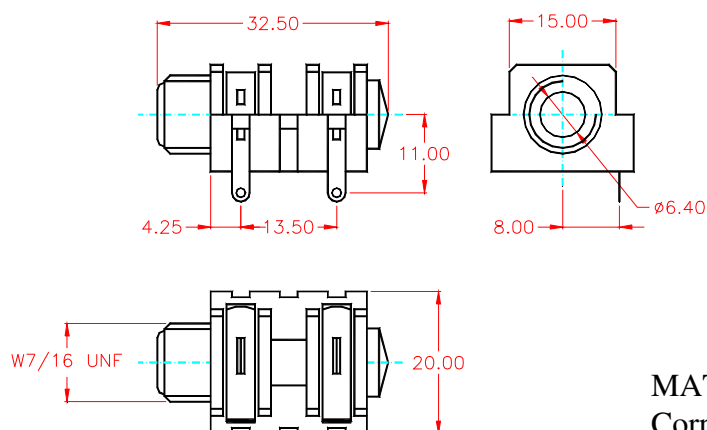
OBS.: As dimensões marcadas com * são os comprimentos existentes para os contatos p/ PCI

A Scott se reserva o direito de modificar as dimensões existentes neste catalogo sem prévio aviso



Fone Jack Mono Open (To Cable)

Jack Mono Aberto p/ fio



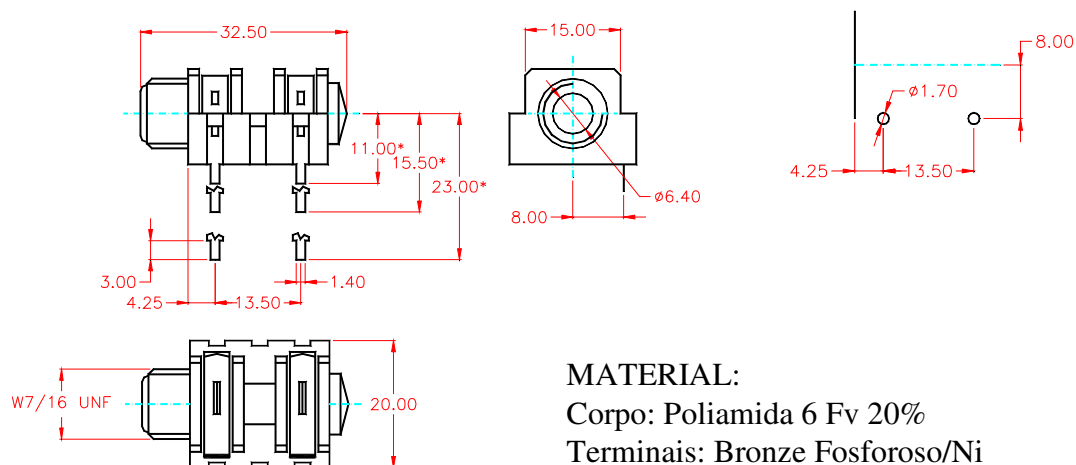
MATERIAL:

Corpo: Poliamida 6 Fv 20%

Terminais: Bronze Fosforoso/Ni

Fone Jack Mono Open (To PCI)

Jack Mono Aberto p/ PCI



MATERIAL:

Corpo: Poliamida 6 Fv 20%

Terminais: Bronze Fosforoso/Ni

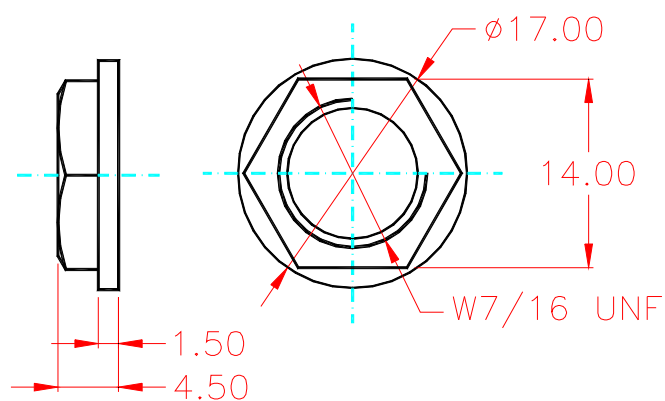
OBS.: As dimensões marcadas com * são os comprimentos existentes para os contatos p/ PCI

A Scott se reserva o direito de modificar as dimensões existentes neste catalogo sem prévio aviso



Fone Jack (Fixation Nut)

Jack (Porca de fixação)

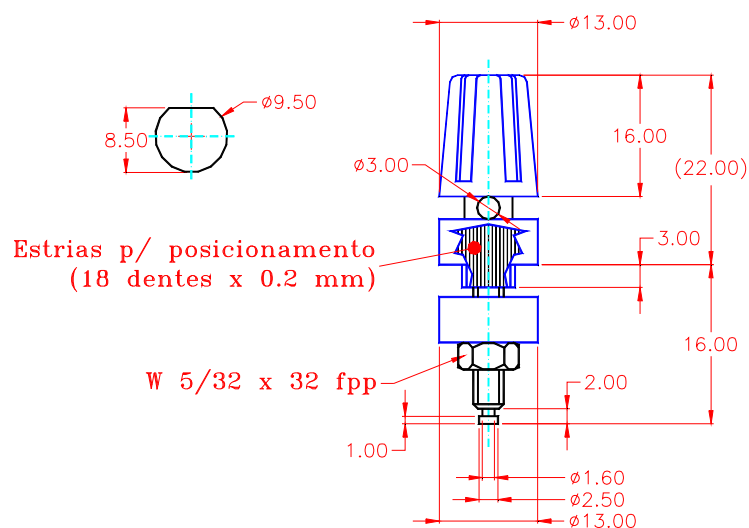


MATERIAL: Poliamida 6 Fv 20%

Obs.: Acompanha todos os modelos de Jack fornecidos

**SCOTT**

Speaker Terminal Board

Borne**MATERIAL:**

Peças plásticas: Poliamida 6 Fv10%

Eixo: Latão/Ni

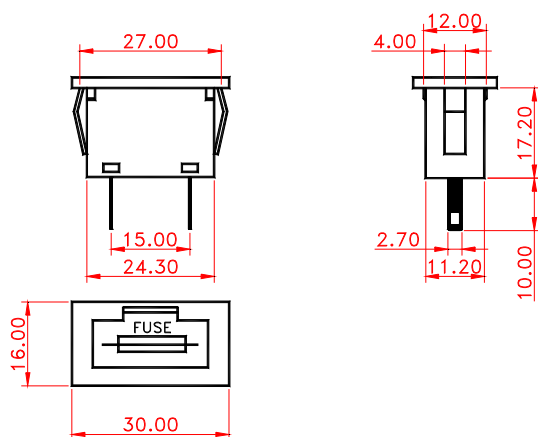
Arruela de contato: Latão/Ni

Arruelas e porcas: Aço/Ni



Fuse Holder

Porta-Fusível

**MATERIAL:**

Corpo: Poliamida 6

Tampa: Poliamida 6

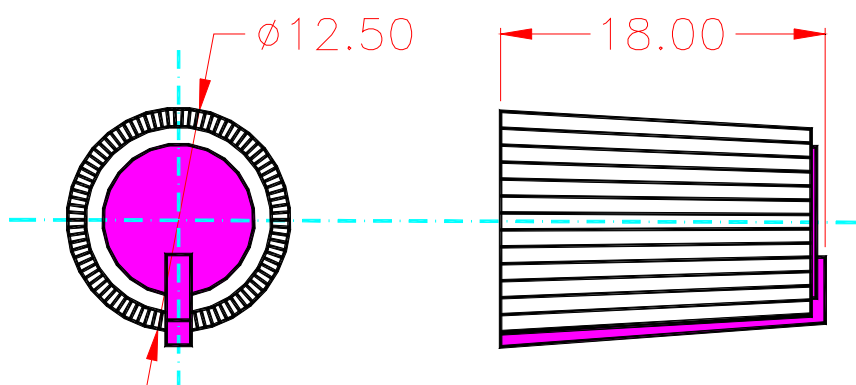
Terminais: Latão/Ni



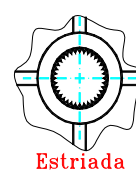
SCOTT

Knob Rotative KB-301

Knob KB-301



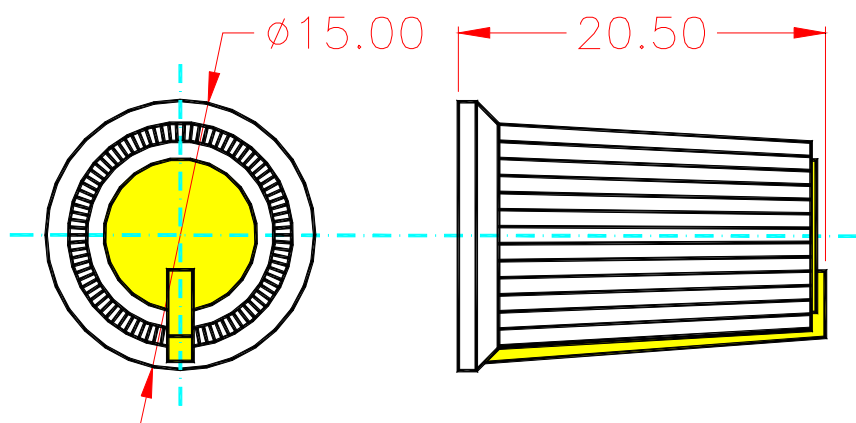
TIPOS DE FIXAÇÃO



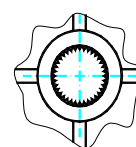
Estriada

Knob Rotative KB-301-S

Knob KB-301-S



TIPOS DE FIXAÇÃO



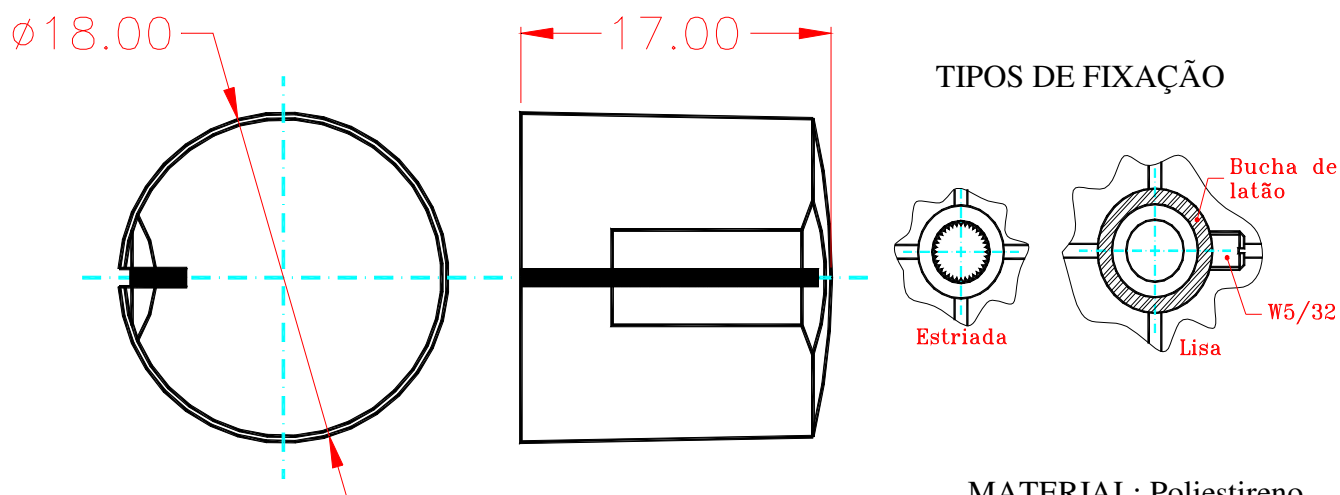
Estriada

A Scott se reserva o direito de modificar as dimensões existentes neste catalogo sem prévio aviso



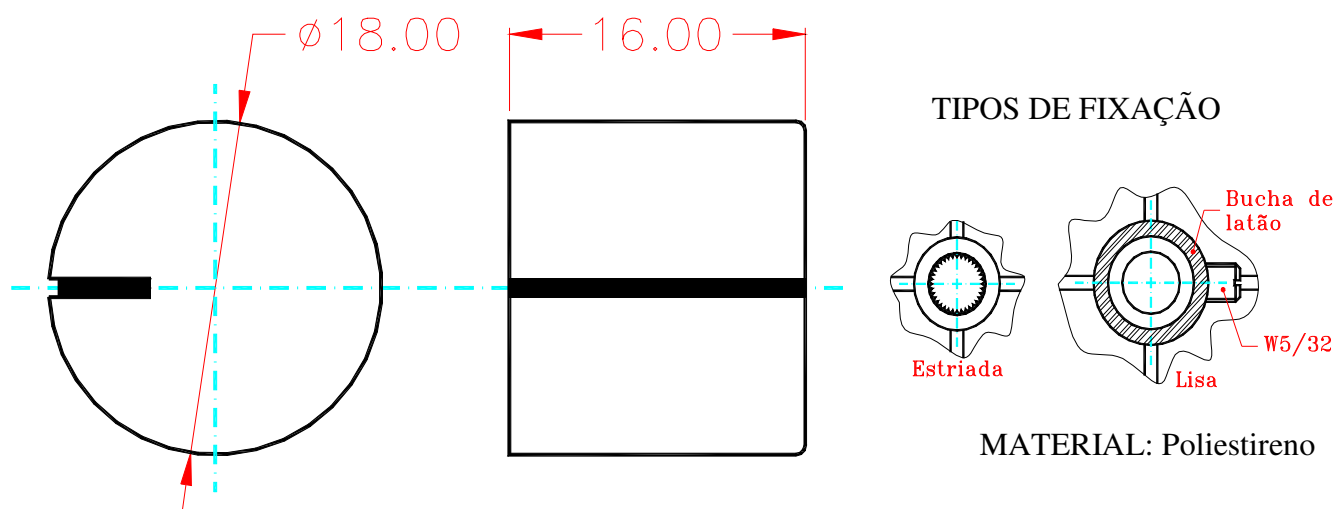
Knob Rotative KP-01

Knob KP-01



Knob Rotative KP-02

Knob KP-02

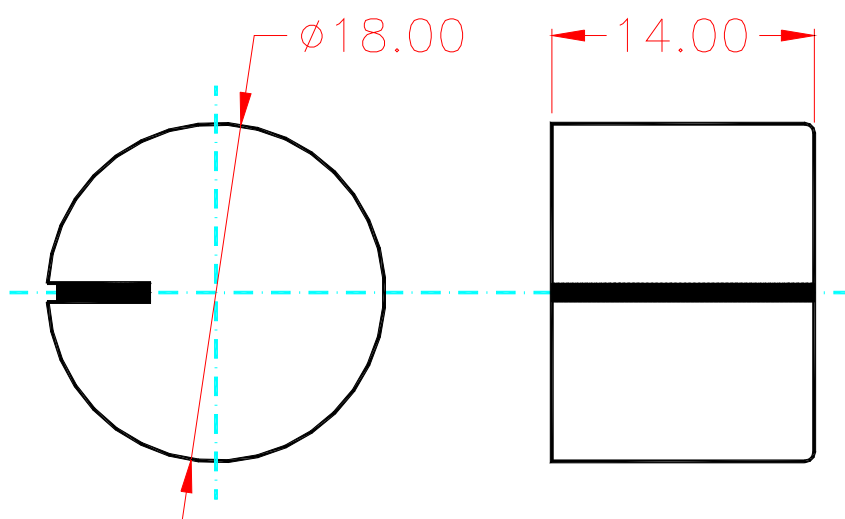


A Scott se reserva o direito de modificar as dimensões existentes neste catalogo sem prévio aviso

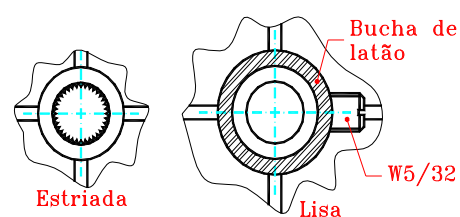


Knob Rotative KP-02-1

Knob KP-02-1



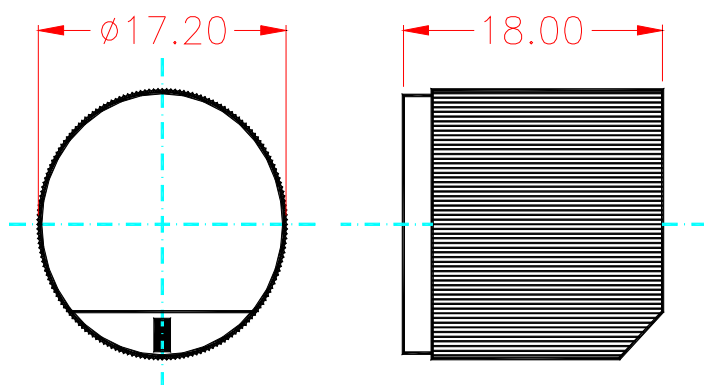
TIPOS DE FIXAÇÃO



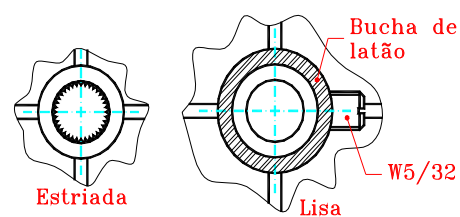
MATERIAL: Poliestireno

Knob Rotative KP-03

Knob KP-03



TIPOS DE FIXAÇÃO



MATERIAL: Poliestireno

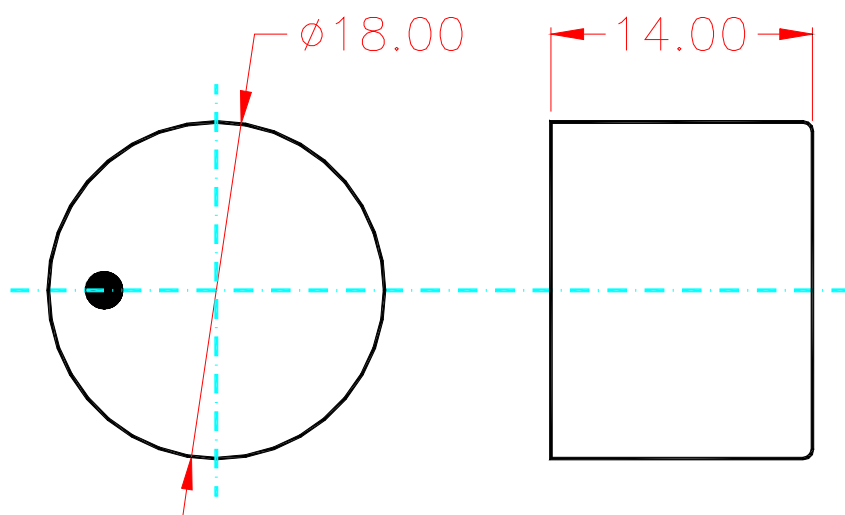
A Scott se reserva o direito de modificar as dimensões existentes neste catalogo sem prévio aviso



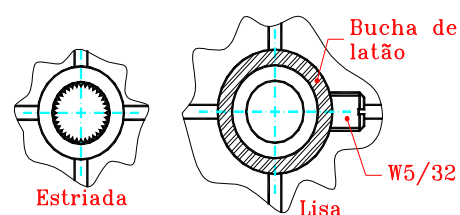
SCOTT

Knob Rotative KP-04

Knob KP-04



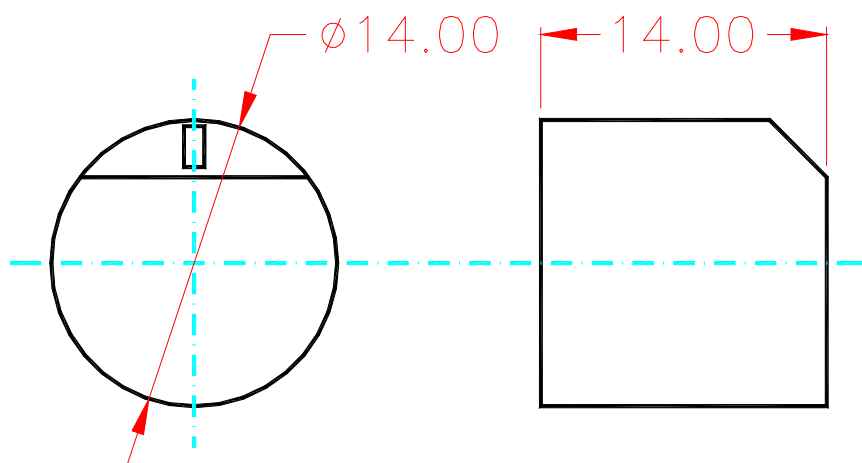
TIPOS DE FIXAÇÃO



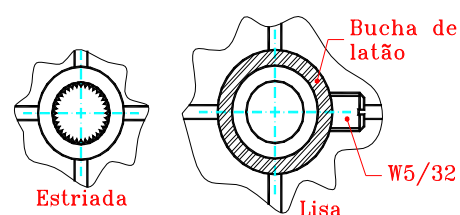
MATERIAL: Poliestireno

Knob Rotative KP-05

Knob KP-05



TIPOS DE FIXAÇÃO



MATERIAL: Poliestireno

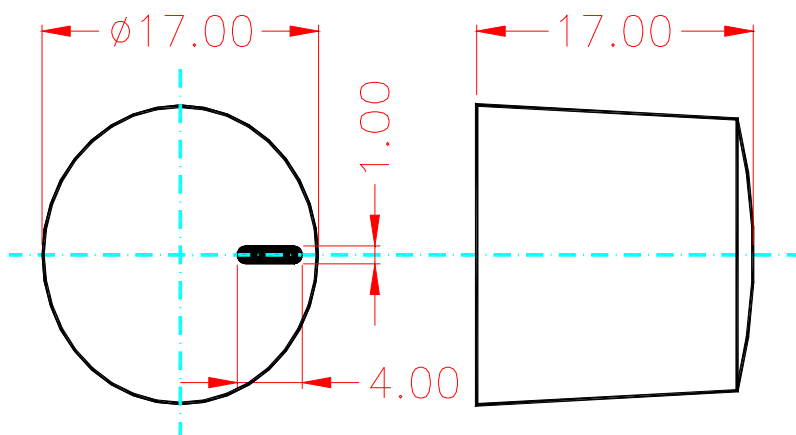
A Scott se reserva o direito de modificar as dimensões existentes neste catalogo sem prévio aviso



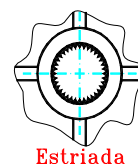
SCOTT

Knob Rotative KP-07

Knob KP-07



TIPOS DE FIXAÇÃO

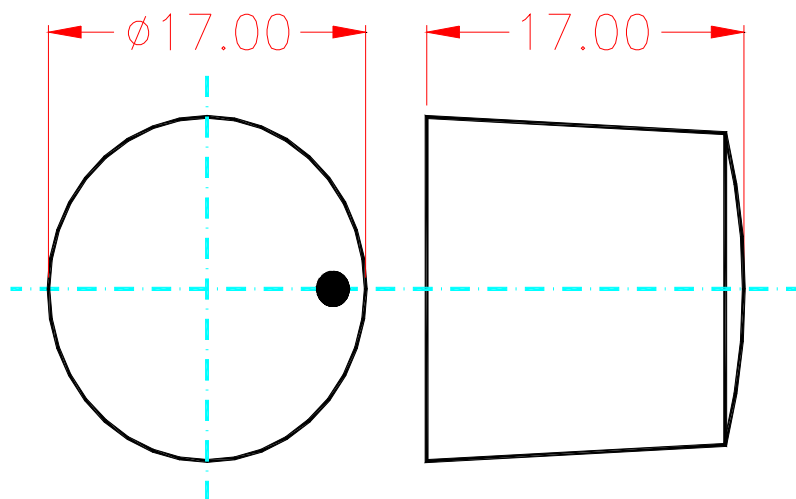


Estriada

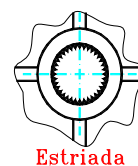
MATERIAL: Poliestireno

Knob Rotative KP-08

Knob KP-08



TIPOS DE FIXAÇÃO



Estriada

MATERIAL: Poliestireno

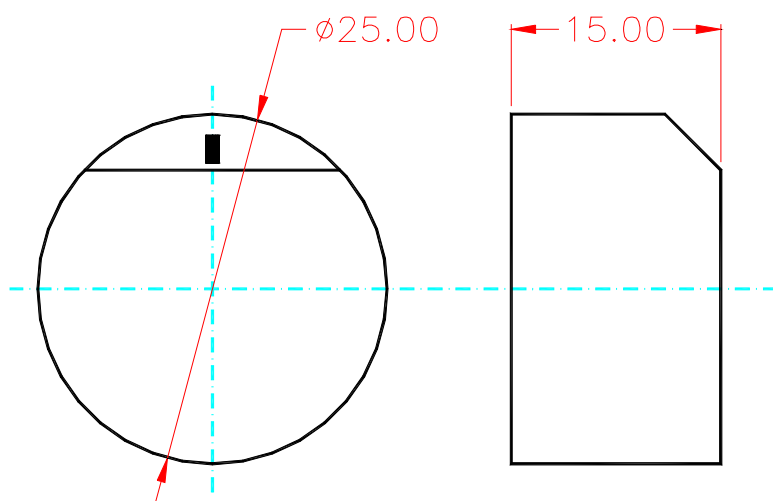
A Scott se reserva o direito de modificar as dimensões existentes neste catalogo sem prévio aviso



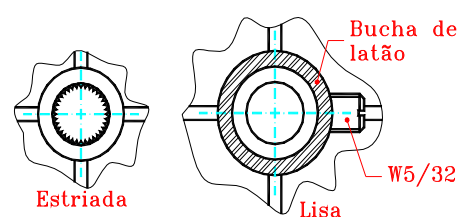
SCOTT

Knob Rotative KP-25

Knob KP-25



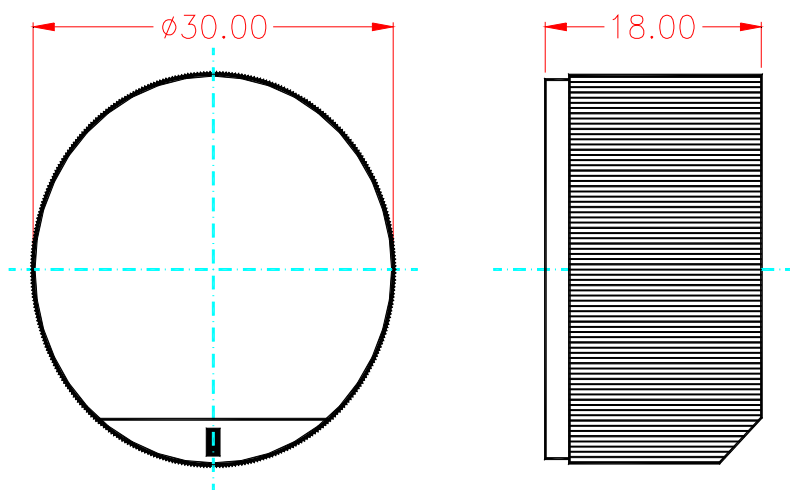
TIPOS DE FIXAÇÃO



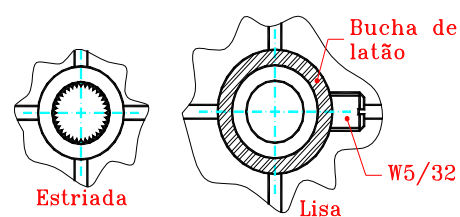
MATERIAL: Poliestireno

Knob Rotative KP-33

Knob KP-33



TIPOS DE FIXAÇÃO



MATERIAL: Poliestireno

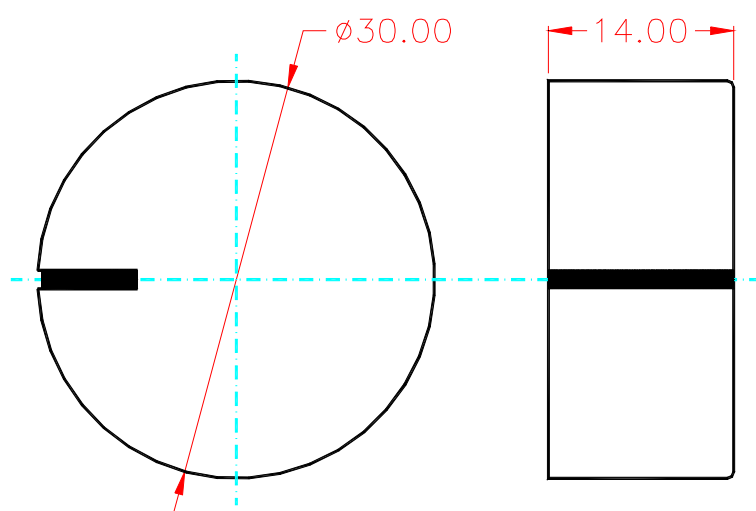
A Scott se reserva o direito de modificar as dimensões existentes neste catalogo sem prévio aviso



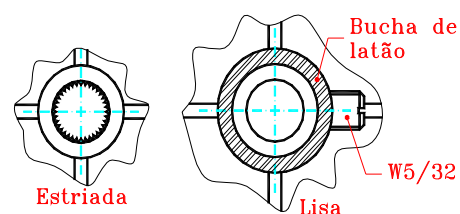
SCOTT

Knob Rotative KP-35

Knob KP-35



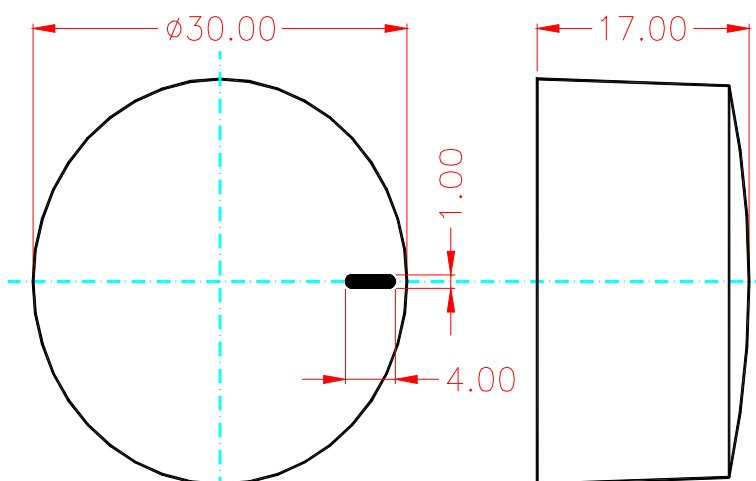
TIPOS DE FIXAÇÃO



MATERIAL: Poliestireno

Knob Rotative KP-37

Knob KP-37



TIPOS DE FIXAÇÃO



MATERIAL: Poliestireno

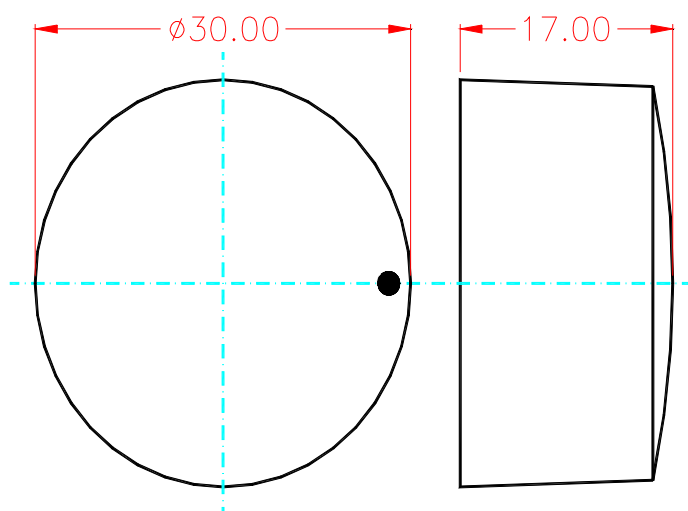
A Scott se reserva o direito de modificar as dimensões existentes neste catalogo sem prévio aviso



SCOTT

Knob Rotative KP-38

Knob KP-38



TIPOS DE FIXAÇÃO

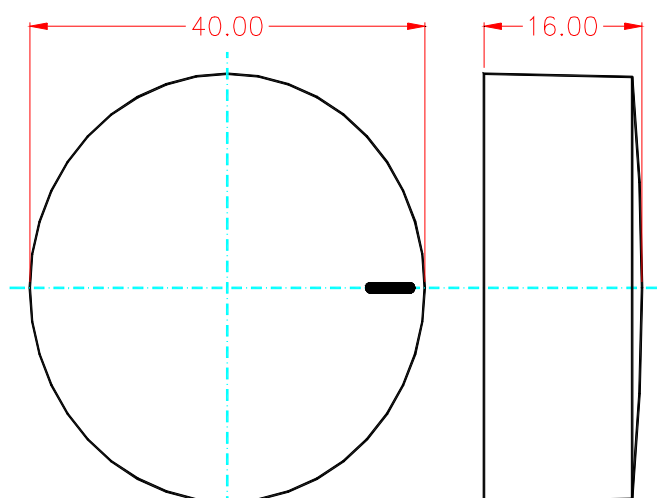


Estriada

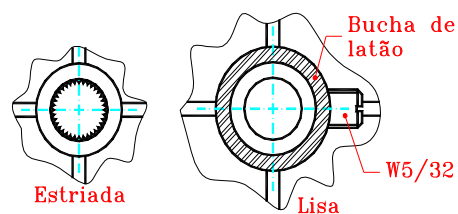
MATERIAL: Poliestireno

Knob Rotative KP-40

Knob KP-40



TIPOS DE FIXAÇÃO



Estriada

Lisa

MATERIAL: Poliestireno

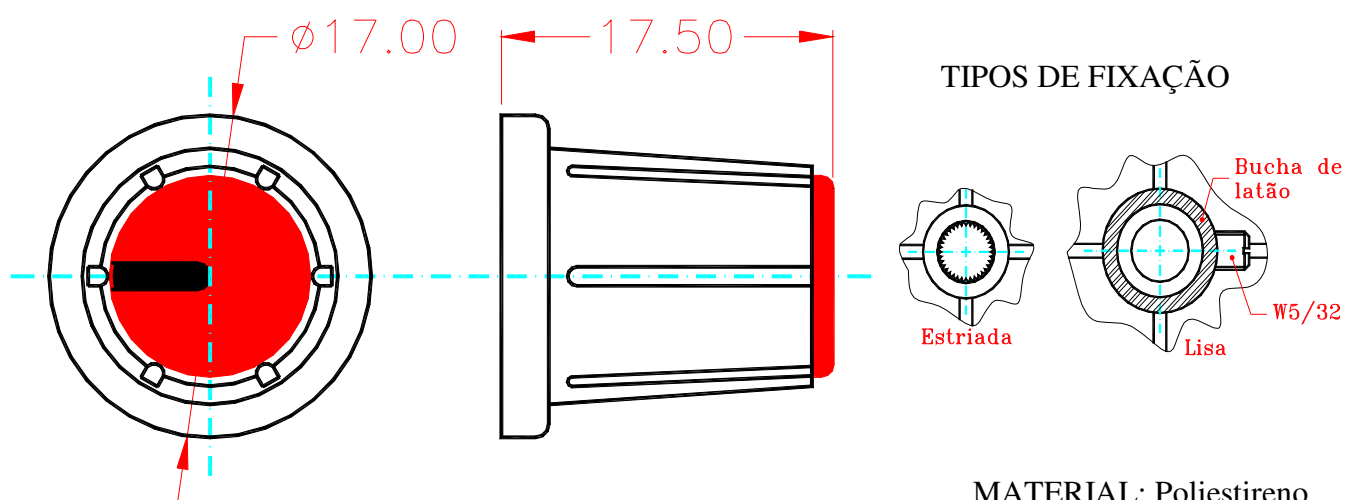
A Scott se reserva o direito de modificar as dimensões existentes neste catalogo sem prévio aviso



SCOTT

Knob Rotative KP-200

Knob KP-200

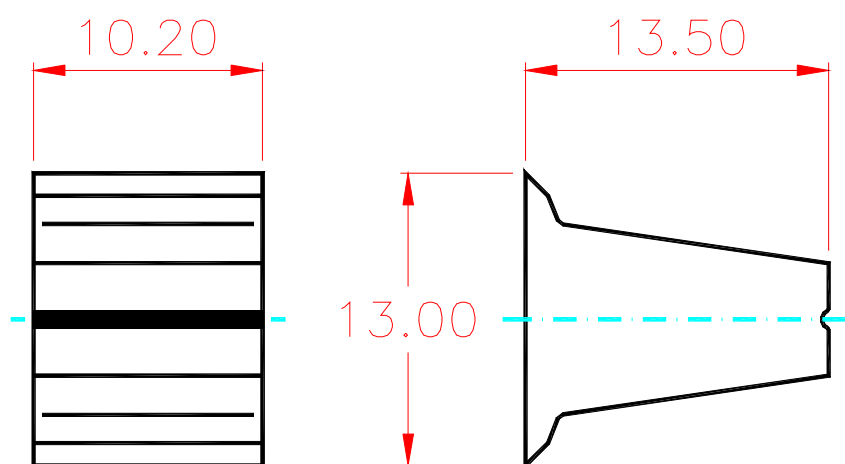


A Scott se reserva o direito de modificar as dimensões existentes neste catalogo sem prévio aviso



Knob Slide SL-06

Knob SL-06

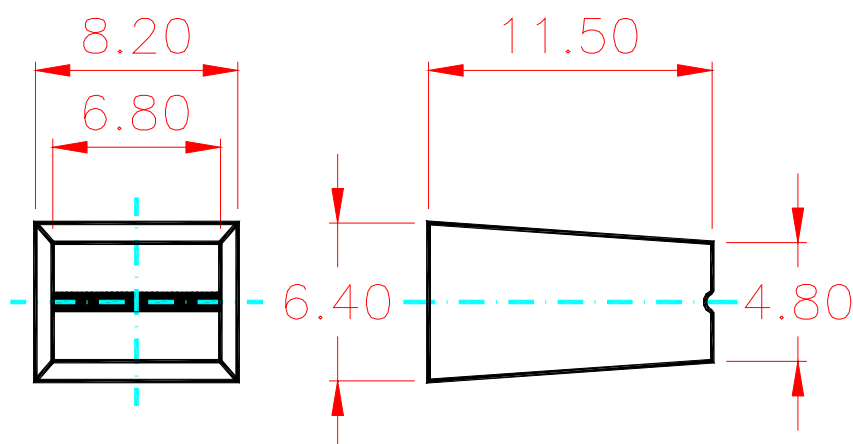


MATERIAL: Poliestireno

OBS.: Para fixação em eixos plásticos e metálicos

Knob Slide SL-08

Knob SL-08



MATERIAL: Poliestireno

OBS.: Para fixação em eixos plásticos e metálicos

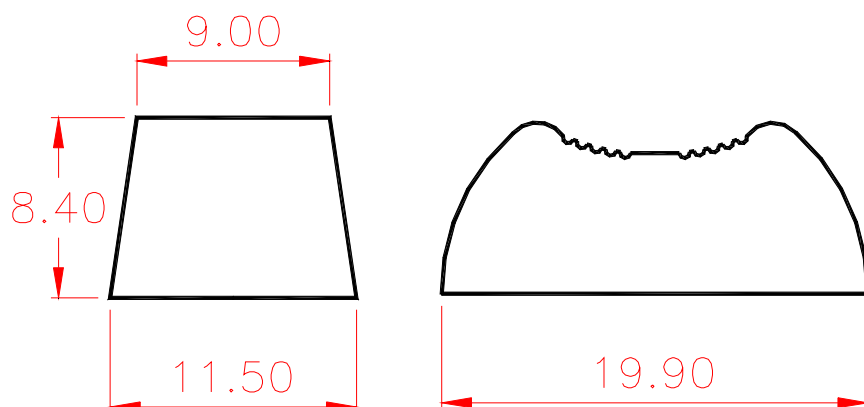
A Scott se reserva o direito de modificar as dimensões existentes neste catalogo sem prévio aviso



SCOTT

Knob Slide SL-09

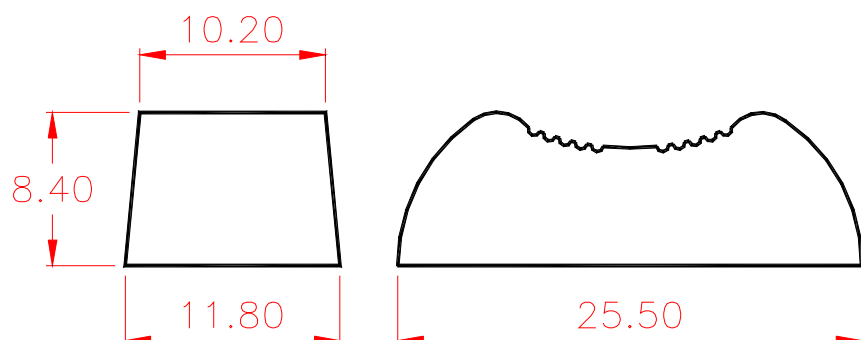
Knob SL-09



MATERIAL: Poliestireno

Knob Slide SL-10

Knob SL-10



MATERIAL: Poliestireno

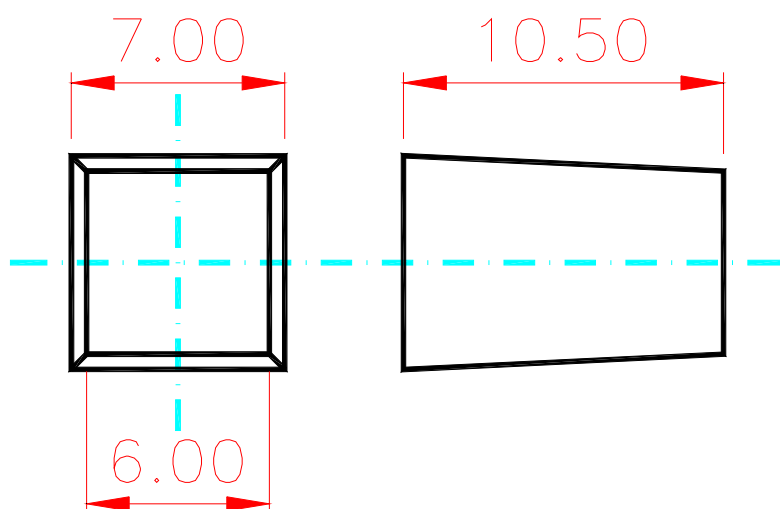
A Scott se reserva o direito de modificar as dimensões existentes neste catalogo sem prévio aviso



SCOTT

Push Button PB-07

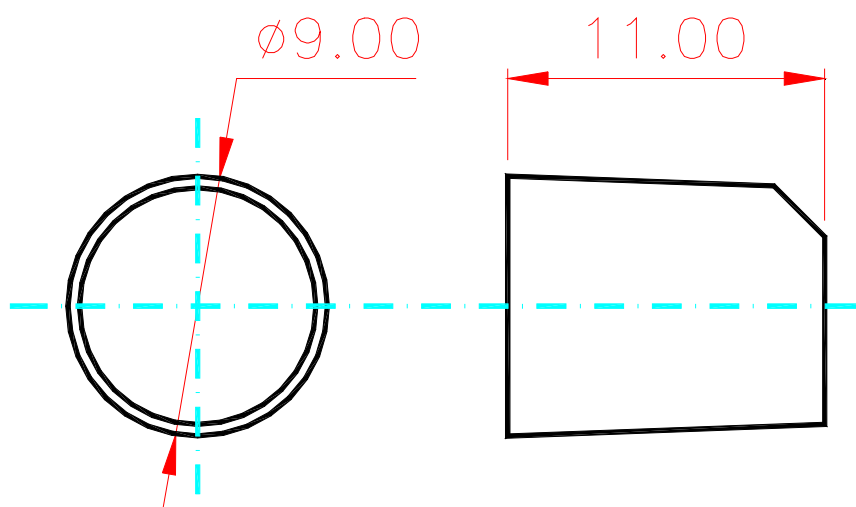
Knob PB-07



MATERIAL: Poliestireno

Push Button PB-09

Knob PB-09



MATERIAL: Poliestireno

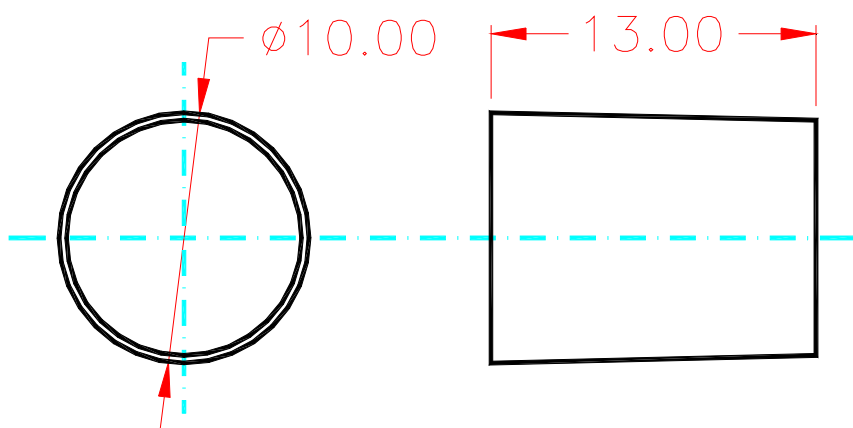
A Scott se reserva o direito de modificar as dimensões existentes neste catalogo sem prévio aviso



SCOTT

Push Button PB-10

Knob PB-10



MATERIAL: Poliestireno

A Scott se reserva o direito de modificar as dimensões existentes neste catalogo sem prévio aviso